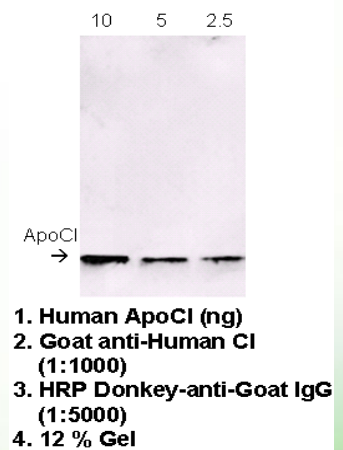


# Product Specification

<b>Catalog No:</b>	31A-G1a, 0.5 mg
<b>Host Species:</b>	Goat
<b>Antibody Concentration:</b>	1 mg / ml ( OD 1.35 / 280 nm ).
<b>Source:</b>	Polyclonal antibody purified by human apo CI-Sepharose™ affinity column.*
<b>Preservation:</b>	75 mM PBS, 75 mM NaCl, 0.5 mM EDTA, 0.02% Na <sub>3</sub> N, pH 7.2.
<b>Specificity:</b>	Specifically binds to human apo CI. Dilution for immunoblot and ELISA range: 200 to 20,000.
<b>Use:</b>	The antibody can be used for detection of apo CI in plasma and lipoproteins, immunoassays, immunoblots, enzyme conjugation, or biotinylation.
<b>Storage:</b>	-20° C for long-term storage, 2-8° C for short-term storage. Aliquot to avoid repeated thaw and freeze.

Western Blot Data for Affinity Purified Goat Anti-Human ApoCI Antibody



™Sepharose is a trademark of Amersham Biosciences Limited.

\*The products are for research or manufacturing use only, not for use in human therapeutic or diagnostic applications.

