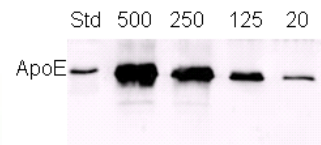


Product Specification

Catalog No:	50A-G1a, 0.5 mg
Host Species:	Goat
Protein Concentration:	1 mg / ml (OD 1.35 / 280 nm).
Source:	Polyclonal goat anti-human apo E purified by human apo E-Sepharose™ affinity column.
Preservative:	75 mM PBS, 75 mM NaCl, 0.5 mM EDTA, 0.01% NaN ₃ , pH 7.2.
Specificity:	Specifically binds to human apo E. Dilution for immunoblot and ELISA range: 200 to 80,000.
Use:	The antibody can be used for detection of apo E in plasma and lipoproteins, immunoassays, immunoblots, enzyme conjugation, or biotinylation.
Storage:	-20° C for long-term storage, 4° C for short-term storage. Aliquot to avoid repeated thaw and freeze.

Western Blot Data for Affinity Purified Goat Anti-ApoE Antibody



Human ApoE (ng/lane)
12% gel

1st : Goat anti-Human ApoE
(1:1000)
2nd : HRP Donkey anti-Goat IgG
(1:5000)

™Sepharose is a trademark of Amersham Biosciences Limited.

*The products are for research or manufacturing use only, not for use in human therapeutic or diagnostic applications.

