

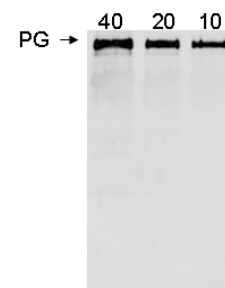
# Product Specification

<b>Catalog No:</b>	PG60A-G1, 5 mg
<b>Host Species:</b>	Goat
<b>Antibody Concentration:</b>	1 mg / ml ( OD 1.35 / 280 nm ).
<b>Source:</b>	Polyclonal antibody purified by human plasminogen-Sepharose affinity column.*
<b>Preservation:</b>	In 10 mM PBS, 0.15 M NaCl, 0.02% NaN <sub>3</sub> , 0.5 mM EDTA, pH 7.2.
<b>Specificity: immunoblot</b>	Specifically binds to human plasminogen. Dilution for and ELISA range: 200 to 40,000.
<b>Use:</b>	The antibody can be used for detection of plasminogen in plasma and lipoproteins, immunoassays, immunoblots, enzyme conjugation, or biotinylation.
<b>Storage:</b>	-20° C for long-term storage, 2-8° C for short-term storage. Aliquot to avoid repeated freezing and thawing.

*\*Sepharose is a trademark of Amersham Biosciences Limited.*

*\*The products are for research or manufacturing use only, not for use in human therapeutic or diagnostic applications.*

Western Blot Data for Affinity Purified Goat Anti-Human Plasminogen Antibody



1. Human Plasminogen (ng/lane)
2. Goat anti-Human plasminogen (1:1000)
3. HRP Donkey anti-Goat IgG (1:5000)
4. 4-20% gel (Invitrogen Co.)