

Product Specification

Description: **Goat Anti- Human C-Reactive Protein (CRP); Polyclonal Antibody; Affinity Purified.**

Catalog No: CRP 30A-G1a, 0.5mg

Host Species: Goat

Antibody Concentration: 1 mg / ml (OD 1.35 / 280 nm).

Source: Goat anti human CRP polyclonal antibody purified by human CRP affinity column.

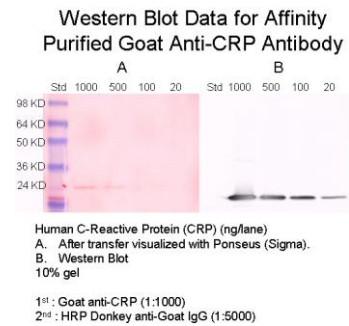
Buffer: In 75 mM Sodium Phosphate, 75 mM NaCl, 0.5 mM EDTA, 0.02% NaN₃, pH 7.2.

Specificity: Specifically binds to human CRP. Dilution for Immunoblot & ELISA range: 200 to 80,000. Centrifuge before use.

Use: The antibody can be used for detection of CRP in plasma, immunoassays, immunoblots, enzyme conjugation, or biotinylation

Storage: -20° C for long-term storage, 2-8°C for short-term storage. Aliquot to avoid repeated thaw and freeze.

Importance: Human C-reactive protein (CRP) is an acute phase protein produced by the liver. It is a member of the pentraxin family of proteins with five identical nonglycosylated subunits of 206 amino acids each (m.w. 24 kDa). Among other markers of inflammation, CRP has been showed the strongest association with cardiovascular events. Clinical studies demonstrated that coronary mortality among patients with unstable angina and elevated CRP is significantly higher comparing with the patients without elevated CRP. It is an important biomarker for detecting individuals at high risk of plaque rupture.



™Sephacrose is a trademark of Amersham Biosciences Limited.

**The products are for research or manufacturing use only, not for use in human therapeutic or diagnostic applications.*