

Product Specification

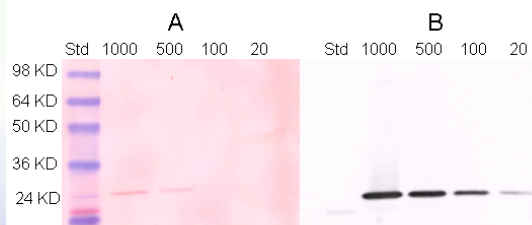
Catalog No:	CRP 30A-R1a, 0.5 mg
Host Species:	Rabbit
Antibody Concentration:	1 mg / ml (OD 1.35 / 280 nm).
Source:	Polyclonal antibody purified by human CRP-Sepharose™ affinity column. *
Preservation:	75 mM PBS, 75 mM NaCl, 0.02% NaN ₃ , 0.5 mM EDTA, pH 7.2.
Specificity:	Specifically binds to human CRP. Dilution for immunoblot and ELISA range: 200 to 160,000.
Use:	The antibody can be used for detection of CRP in plasma and lipoproteins, immunoassays, immunoblots, enzyme conjugation, or biotinylation.
Storage:	-20° C for long-term storage, 2-8° C for short-term storage. Aliquot to avoid repeated thaw and freeze.

Importance: Human C-reactive protein (CRP) is an acute phase protein produced by the liver. It is a member of the pentraxin family of proteins with five identical nonglycosylated subunits of 206 amino acids each (m.w. 24 kDa). Among other markers of inflammation, CRP has been showed the strongest association with cardiovascular events. Clinical studies demonstrated that coronary mortality among patients with unstable angina and elevated CRP is significantly higher comparing with the patients without elevated CRP. It is an important biomarker for detecting individuals at high risk of plaque rapture.

™Sepharose is a trademark of Amersham Biosciences Limited.

**The products are for research or manufacturing use only, not for use in human therapeutic or diagnostic applications.*

Western Blot Data for Affinity Purified Rabbit Anti-CRP Antibody



Human C-Reactive Protein (CRP) (ng/lane)
A. After transfer visualized with Ponceus (Sigma).
B. Western Blot
10% gel

1st : Rabbit anti-CRP (1:1000)
2nd : HRP Goat anti-Rabbit IgG (1:5000)