



Academy Bio-Medical Company, Inc.

1417 Kress Street ❖ Houston, Texas 77020 ❖ U. S. A. ❖ Phone: (713) 675-4040 ❖ Fax: (713) 673-4049

Product Specifications

Description: Human C-Reactive Protein (CRP).

Catalog No: 30P-CRP-105, 0.5 mg

Lot No:

Protein

Concentration: 1mg / ml, determined by the Lowry method.

Expiration:

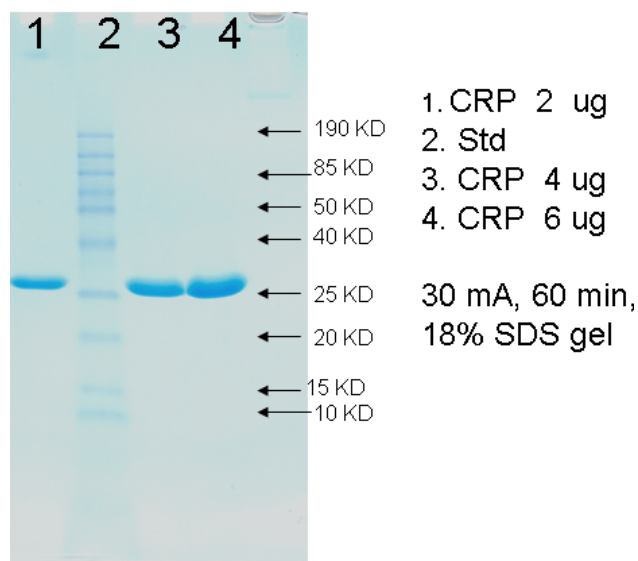
Source: From human pleural fluid

Purity: ≥ 99 % by SDS-PAGE.

Preservation: 50 mM Tris-HCl, 250 mM NaCl, 5 mM CaCl₂, 0.1% NaN₃, pH 8.0.

Storage: 4° C for short-term storage and -20° C for long-term storage. Aliquot to avoid repeated thaw and freeze.

Importance: Human C-reactive protein (CRP) is an acute phase protein produced by the liver. It is a member of the pentraxin family of proteins with five identical nonglycosylated subunits of 206 amino acids each (m.w. 24 kDa). Among other markers of inflammation, CRP has been showed the strongest association with cardiovascular events. Clinical studies demonstrated that coronary mortality among patients with unstable angina and elevated CRP is significantly higher comparing with the patients without elevated CRP. It is an important biomarker for detecting individuals at high risk of plaque rapture.



- The products are for research or manufacturing use only, not for use in diagnostic applications.